



NEW

HDM690 Vise

The first 6 inch pull type vise with a 9 inch opening

HD style Quick Change movable jaw

Patent Pending

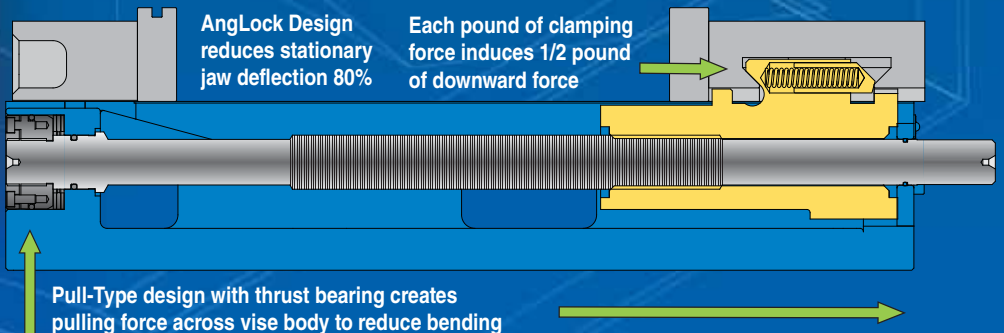
GrooveLock® jaw and workstop included

Top down bolting for less deflection and ease of cleaning



Pull type design for higher accuracy

KURT Anglock® design combined with pull-type design provides ultimate rigidity and accuracy



AngLock Design reduces stationary jaw deflection 80%

Each pound of clamping force induces 1/2 pound of downward force

Pull-Type design with thrust bearing creates pulling force across vise body to reduce bending

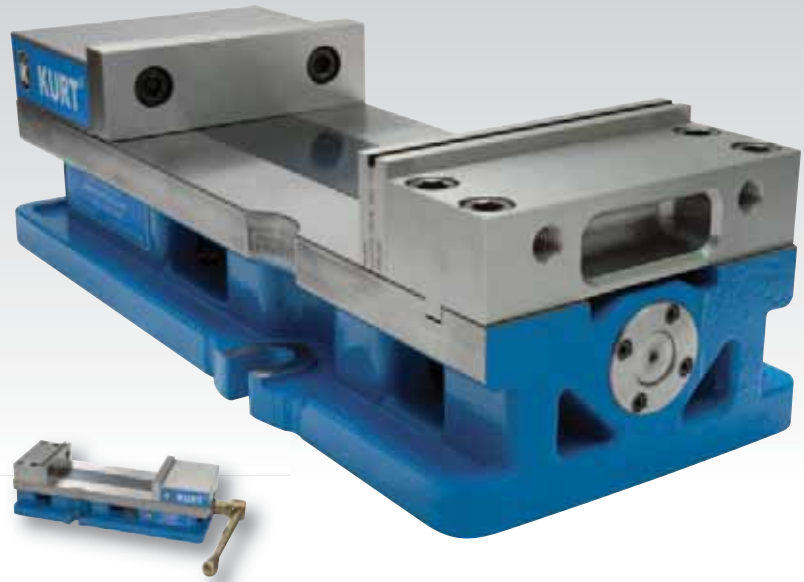


HDM690 VISE **NEW**

PATENT PENDING

HDM690 Vise Features:

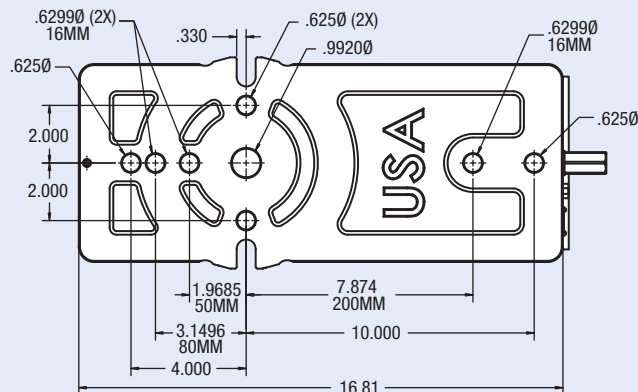
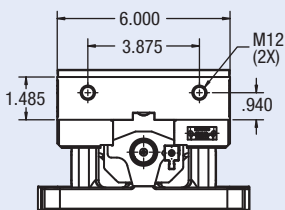
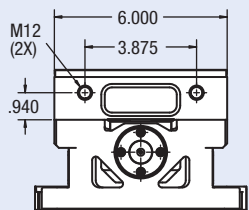
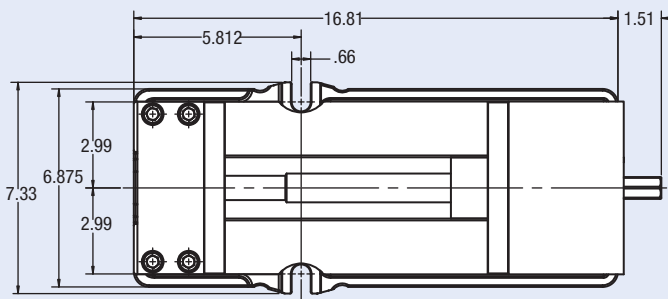
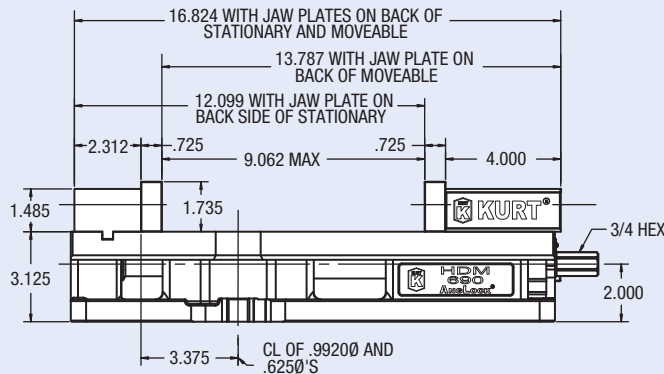
- A full 9 inch opening between jaws.
- Less deflection of stationary jaw. Wider more stable stationary jaw equals less deflection.
- Stationary jaw bolts down from top. No need to remove from table to disassemble vise. Bolting the stationary from the top reduces the stress in the body and will stay flatter after assembly.
- Narrower body width allows more vises in the same work envelope.
- Taller body design equals less deflection under clamping loads.
- Bolts and locates directly on standard grid plates: 40mm, 50mm or 2 inch.
- Pull type body design reduces stress in the body resulting in more accurate clamping.
- Quick change movable jaw. The HD platform movable jaw allows for quick change and carvability to hold that odd shaped part.
- GrooveLock® jaw and workstop included.
- Adaptable to hydraulic. Uses sine keys for alignment.
- Swivel base available.



Machineable jaws are reversible to provide multiple setups for similar or dissimilar parts.



Torque-Ft. Lbs.	Clamping Force LBS.
10	975
20	1,625
30	2,400
40	3,250
50	3,700
60	4,275
70	4,700
80	5,250
90	6,000



Printed in USA © Copyright. All rights reserved
LIT.FLY.HDM690.10.01