



**NEW!**

# HDL AngLock Towers and Vises 4 Inch Models



**KURT** LIFETIME WARRANTY  
**K** **IRONCLAD**  
MADE IN U.S.A.



# HDL AngLock® VISES (4 INCH)

**4 Inch Models:**  
**HDLM4 Manual**  
**HDHLM4 Hydraulic – PATENTED**

**NEW**

The HDL Anglock® Vises are high density long vises with two clamping stations. They provide repeatable clamping to 0.0002" and combine high density with heavy duty features. Designed on a rugged 80,000 PSI ductile iron body with steel components, both models provide strength, rigidity and long term accuracy while absorbing machining vibration.

**Features:**

- Two clamping stations – repeatable clamping to 0.0002".
- Full 3" opening in each station with standard hard jaw system.
- Jaws are indexable 180 degrees.
- Manual and hydraulic models available.
- Fast easy conversion between manual and hydraulic models. Part # HDHLM4-3-SA-KIT.
- Maximizes the number of parts in the work envelope.
- Adjustable pre-load feature allows you to minimize pre-load range thus reducing the turns of the handle to open or close the vise (manual version).
- Holding block features the ability to clamp same or dissimilar sized parts and provides pre-loading ability in the front or back jaw (manual version).
- Lifetime Iron Clad Warranty.



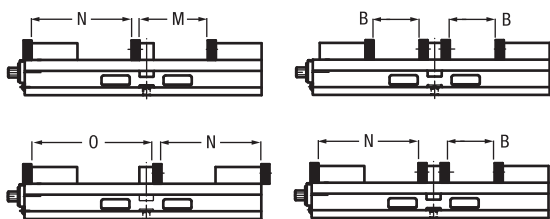
(shown with optional machinable aluminum jaws)

**Jaws for HDL Vises are sold separately and available with the following options.**

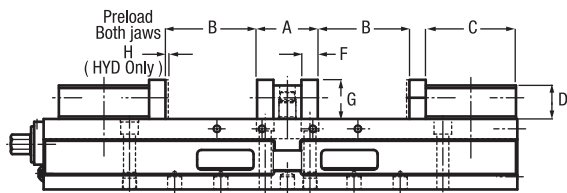
- Hard Jaws
- Machinable Aluminum Jaws
- Machinable Ductile Iron Jaws
- Aluminum Fixture Plate

Dimensional Data High Density 4" Full Open Vise HDL Manual & Hydraulic								
	OPTIONAL HARD JAWS HDLM4J-JAWKIT Shipping Weight 4.53kgs/10lbs				Convertible OPTION HARD AND CARVABLE JAWS			
	HDLM4J		HDHLM4J		HDLM4J		HDHLM4J	
	MM	Inch	MM	Inch	MM	Inch	MM	Inch
A	59.538	2.344	59.538	2.344	211.938	8.344	211.938	8.344
B	76.200	3.000	76.200	3.000	59.538	2.344	59.538	2.344
C	73.812	2.906	73.812	2.906	225.831	8.891	225.831	8.891
D	28.321	1.115	28.321	1.115	299.644	11.797	299.644	11.797
E	101.600	4.000	101.600	4.000	239.725	9.438	239.725	9.438
F	13.894	0.547	13.894	0.547	87.325	3.438	87.325	3.438
G	31.369	1.235	31.369	1.235	73.431	2.891	73.431	2.891
H	–	–	3.175	0.125	147.244	5.797	147.244	5.797
J	63.500	2.500	63.500	2.500	205.968	8.109	205.968	8.109
K	17.450	0.687	17.450	0.687	55.880	2.200	55.880	2.200
L	M10 x 1.50	M10 x 1.50	M10 x 1.50	M10 x 1.50	409.168	16.109	409.168	16.109
M	121.844	4.797	121.844	4.797	259.080	10.200	259.080	10.200
N	163.906	6.453	163.906	6.453	20.625	Hard Jaws Only 0.812	20.625	Hard Jaws Only 0.812
O	209.550	8.250	209.550	8.250	18.262	0.719	18.262	0.719
P	–	–	–	–	15.240	Hard & Soft Jaws 0.600	15.240	Hard & Soft Jaws 0.600

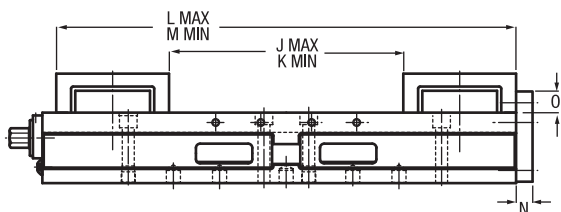
**HARDENED JAW POSITIONS (MANUAL VISE SHOWN)**



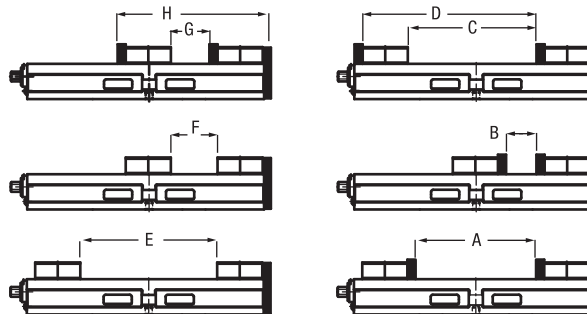
**OPTIONAL HARD JAWS (MANUAL VISE SHOWN)**



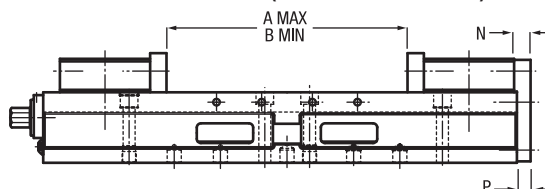
**CONVERTIBLE OPTIONAL FOR CARVABLE JAWS (MANUAL VISE SHOWN)**



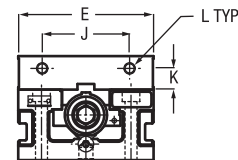
**OPTIONAL CONVERTIBLE KIT (HDLM4-CONVKIT) - JAW POSITIONS**



**CONVERTIBLE OPTIONAL FOR HARD JAWS HDLM4J-CONVKIT (MANUAL VISE SHOWN)**

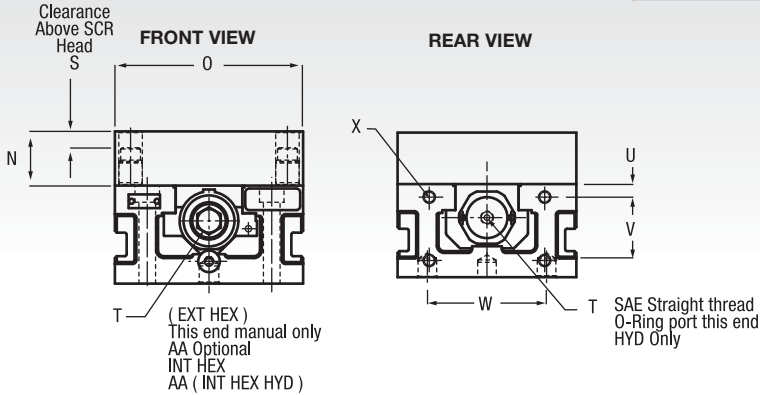
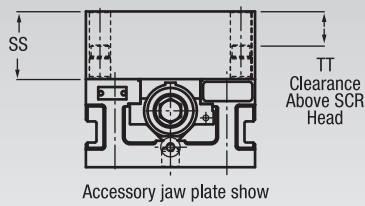


**FRONT VIEW**

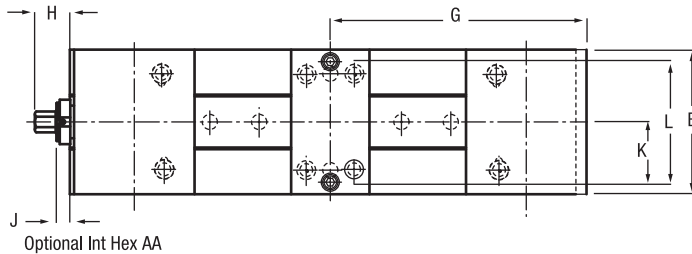


# HDL ANGLock® VISES (4 INCH)

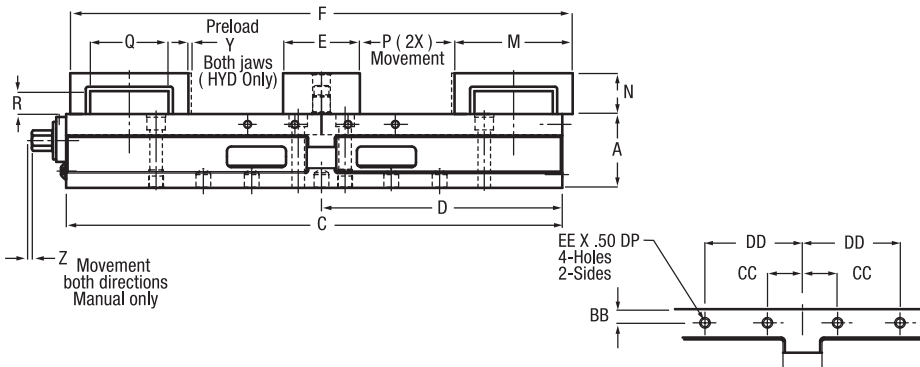
## ACCESSORY JAWKIT WITH OPTIONAL 1.9 HEIGHT JAW



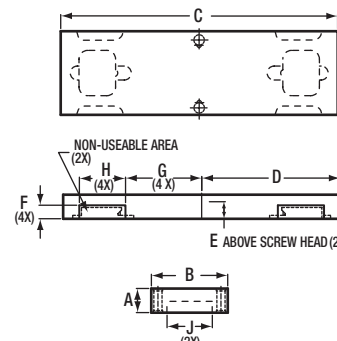
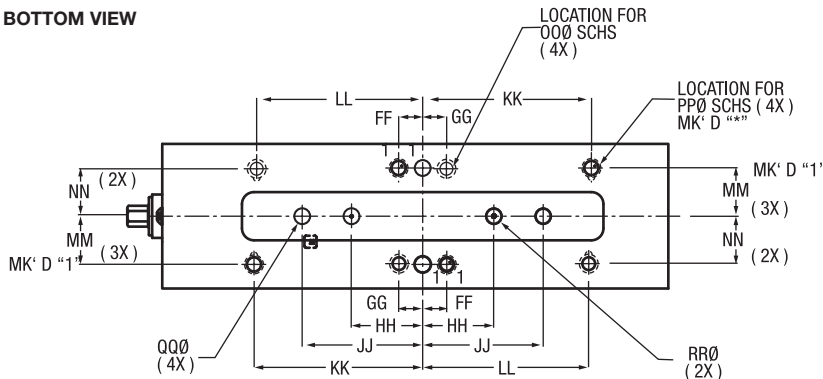
## TOP VIEW



## SIDE VIEW



## BOTTOM VIEW



## Aluminum Fixture Plate Accessory for HDLM Vise & CTHDLM Tower 4"

	HDLM4ALP419	
	mm	inch
A	48.26	1.900
B	101.60	4.00
C	393.70	15.500
D	196.85	7.750
E	40.54	1.596
F	-	-
G	-	-
H	20.57	0.810
J	65.07	2.562
K	100.84	3.970
L	65.02	2.560

Torque-Fl. Lbs.	CLAMPING FORCE LBS.		
	HDLM4	Hydraulic PSI	HDHLM4
10	1,040	1,000	775
20	2,125	1,500	1,450
30	3,140	2,000	1,900
40	4,040	2,500	2,550
50	4,980	3,000	3,100
60	5,870	3,500	3,700
		4,000	4,200
		4,500	4,800

	Dimensional Data			
	High Density 4" Full OpenVise HDL Manual & Hydraulic			
	HDLM4		HDHLM4	
	MM	Inch	MM	Inch
A	60.325	2.375	60.325	2.375
B	101.600	4.000	101.600	4.000
C	415.925	16.375	415.925	16.375
D	200.025	7.875	200.025	7.875
E	63.500	2.500	63.500	2.500
F	418.287	16.468	418.287	16.468
G	209.144	8.234	209.144	8.234
H	33.680	1.326	-	-
J	9.855	0.388	-	-
K	41.275	1.625	41.275	1.625
L	82.550	3.250	82.550	3.250
M	101.600	4.000	101.600	4.000
N	35.560	1.400	35.560	1.400
O	101.600	4.000	101.600	4.000
P	75.794	2.984	75.794	2.984
Q	65.075	2.562	65.075	2.562
R	20.625	0.812	20.625	0.812
S	7.722	0.304	7.722	0.304
T	14.275 EXT HEX	0.562 EXT HEX	7/16 - 20 UNF O-RING PORT	7/16 - 20 UNF O-RING PORT
U	9.525	0.375	9.525	0.375
V	42.875	1.688	42.875	1.688
W	63.500	2.500	63.500	2.500
X	M8 x 1.25	M8 x 1.25	M8 x 1.25	M8 x 1.25
Y	-	-	3.175	0.125
Z	3.048	0.120	-	-
AA	11.099 INT HEX	0.437 INT HEX	11.900 INT HEX	0.437 INT HEX
BB	9.525	0.375	9.525	0.375
CC	34.325	1.375	34.325	1.375
DD	65.100	2.563	65.100	2.563
EE	M8 x 1.25	M8 x 1.25	M8 x 1.25	M8 x 1.25
FF	19.050	0.750	19.050	0.750
GG	20.000	0.787	20.000	0.787
HH	100.000	3.937	100.000	3.937
JJ	133.350	5.250	133.350	5.250
KK	133.350	5.250	133.350	5.250
LL	100.000	3.937	100.000	3.937
MM	38.100	1.500	38.100	1.500
NN	40.000	1.575	40.000	1.575
OO	M8 SHCS	M8 SHCS	M8 SHCS	M8 SHCS
PP	5/16 SHCS	5/16 SHCS	5/16 SHCS	5/16 SHCS
QQ	15.875	0.625	15.875	0.625
RR	16.000	0.6299	16.000	0.6299
SS	48.260	1.900	48.260	1.900
TT	20.422	0.804	20.422	0.804
	34 lbs/15.42 kgs		33 lbs/14.96 kgs	
	Estimated Shipping Weight of Vise Body Only			



# HDL CARVLOCK® TOWERS (4 INCH)

**Models:**  
CTHDLM443  
CTHDLM444  
CTHDLM445

**NEW**

This manually operated, eight station HDL Cluster Tower system features a ductile iron integral vise tower. Designed for use on mid-size and larger machining centers including horizontal and vertical machining centers with a fourth axis and indexable tables. This workholding system achieves workpiece immobility while damping cutter induced vibration.

**Features:**

- High density vise tower system. Hold multiple parts in eight clamping stations. Increase part volume.
- Repeatable clamping to 0.0002". Each station delivers up to 5,870 lbs. of clamping force at 60 ft lbs of torque.
- Self-adjusting holding block of either front or back jaw for clamping the same or dissimilar sized parts. To further enhance fast operation, an adjustable pre-load feature reduces handle turns for opening and closing clamping stations.
- Ductile iron column insures strength, rigidity and long term accuracy.
- Jaw options available to fit your application. Select from Hard jaws, Machinable aluminum jaws, Machinable ductile Iron jaws.
- Jaws are indexable 180 degrees.
- Base sizes available include: 300mm, 400mm, 500mm.
- Elevated column makes clearing chips and contaminants fast and easy.
- Lifetime Iron Clad Warranty.

CLAMPING FORCE LBS.			
Torque- Ft. Lbs.	HDLM4	Hydraulic PSI	HDHLM4
10	1,040	1,000	775
20	2,125	1,500	1,450
30	3,140	2,000	1,900
40	4,040	2,500	2,550
50	4,980	3,000	3,100
60	5,870	3,500	3,700
		4,000	4,200
		4,500	4,800



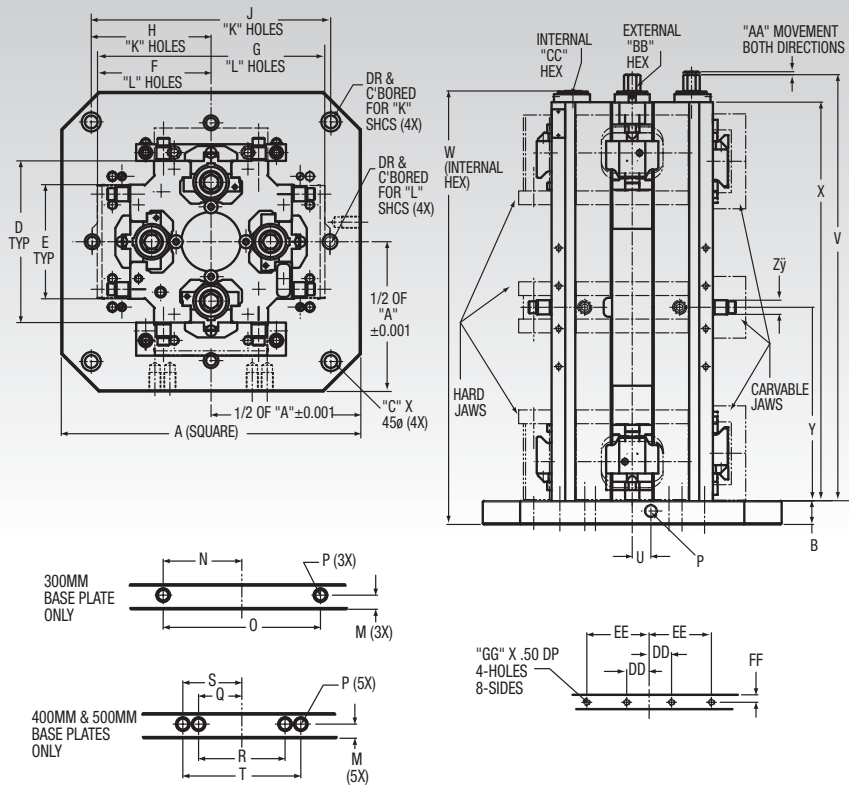
**CTHDLM444AL**  
(shown with optional machinable aluminum jaws)

*Jaws for HDL Towers are sold separately and available with the following options.*

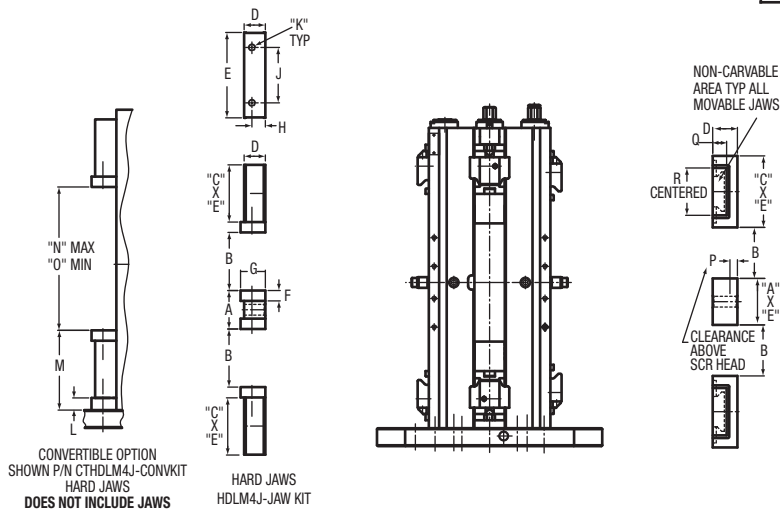
- Hard Jaws • Machinable Aluminum Jaws
- Machinable Ductile Iron Jaws
- Aluminum Fixture Plate

**CTHDLM444J**  
(shown with optional hard jaws)

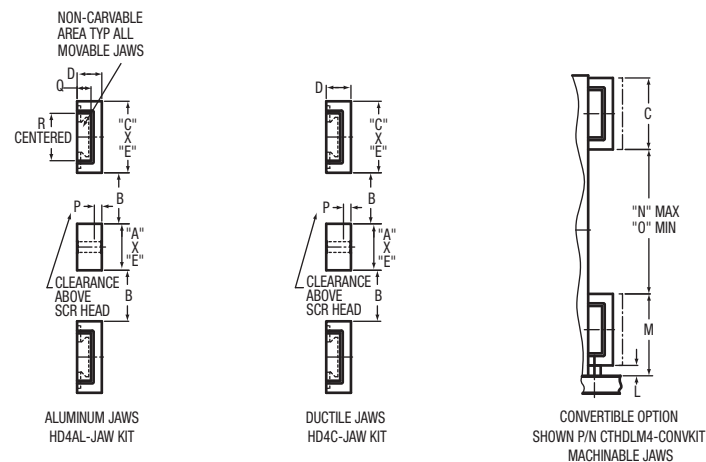
# HDL CARVLOCK® TOWERS (4 INCH)



Dimensional Data HDL Long Cluster Tower						
	CTHDLM443		CTHDLM444		CTHDLM445	
	MM	Inch	MM	Inch	MM	Inch
A	300.00	11.811	400.00	15.748	500.00	19.685
B	25.40	1.000	31.750	1.250	31.75	1.250
C	20.00	0.790	50.00	1.970	60.00	2.360
D	158.75	6.250	158.75	6.250	158.75	6.250
E	101.60	4.000	101.60	4.000	101.60	4.000
F	-	-	158.75	6.250	203.20	8.000
G	-	-	317.50	12.500	406.40	16.000
H	127.00	5.000	160.00	6.299	200.00	7.874
J	254.00	10.000	320.00	12.598	400.00	15.748
K	M12SHCS	1/2 SHCS	M16SHCS	5/8 SHCS	M16SHCS	5/8 SHCS
L	-	-	M12SHCS	1/2 SHCS	M12SHCS	1/2 SHCS
M	15.00	0.590	18.000	0.709	18.000	0.709
N	40.00	1.575	-	-	-	-
O	80.00	3.150	-	-	-	-
P	M12 x 1.75	-	M16 x 2.0	-	M16 x 2.0	-
Q	-	-	55.00	2.165	55.00	2.165
R	-	-	110.00	4.330	110.00	4.330
S	-	-	75.00	2.953	75.00	2.953
T	-	-	150.00	5.906	150.00	5.906
U	00.00	0.000	25.00	0.984	25.00	0.984
V	449.60	17.701	449.60	17.701	449.60	17.701
W	451.18	17.763	457.53	18.013	457.53	18.013
X	415.92	16.375	415.92	16.375	415.92	16.375
Y	200.03	7.875	200.03	7.875	200.03	7.875
Z	15.00	0.590	15.00	0.590	15.00	0.590
AA	3.05	0.120	3.05	0.120	3.05	0.120
BB	14.28	0.562	14.28	0.562	14.28	0.562
CC	EXT HEX	EXT HEX	EXT HEX	EXT HEX	EXT HEX	EXT HEX
DD	11.10	0.437	11.10	0.437	11.10	0.437
DD	INT HEX	INT HEX	INT HEX	INT HEX	INT HEX	INT HEX
DD	34.92	1.375	34.92	1.375	34.92	1.375
EE	65.10	2.563	65.10	2.563	65.10	2.563
FF	9.53	0.375	9.53	0.375	9.53	0.375
GG	M8 x 1.25	-	M8 x 1.25	-	M8 x 1.25	-



	Jaw Accessories					
	HARD JAWS		ALUMINUM JAWS			
	HDLM4J-Jaw Kit	HDLM4AL-Jaw Kit	HDLM4AL1.9-Jaw Kit	MM	Inch	MM
A	59.538	2.344	63.500	2.500	63.500	2.500
B	76.200	3.000	66.675	2.625	66.675	2.625
C	73.812	2.906	101.600	4.000	101.600	4.000
D	28.321	1.115	35.560	1.400	48.260	1.900
E	101.600	4.000	101.600	4.000	101.600	4.000
F	13.894	0.547	-	-	-	-
G	31.369	1.235	-	-	-	-
H	17.450	0.687	-	-	-	-
J	63.500	2.500	-	-	-	-
K	M10 x 1.50	-	-	-	-	-
L	-	-	-	-	-	-
M	-	-	-	-	-	-
N	-	-	-	-	-	-
O	-	-	-	-	-	-
P	-	-	7.722	0.304	20.422	0.804
Q	-	-	20.625	0.812	20.625	0.812
R	-	-	65.075	2.562	65.075	2.562

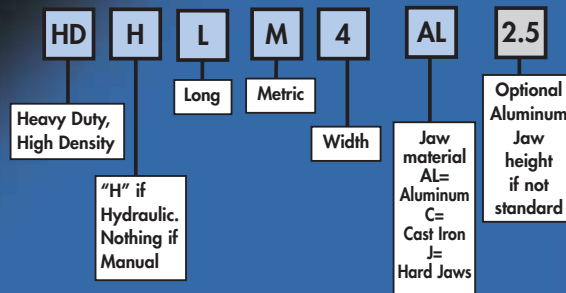


	Jaw Accessories Convertible Option					
	DUCTILE JAWS		HARD JAWS		CARVABLE JAWS	
	HDM4C-Jaw Kit	CTM4300-239	CTHDLM443-338	MM	Inch	MM
A	63.500	2.500	-	-	-	-
B	66.675	2.625	-	-	-	-
C	101.600	4.000	-	-	-	-
D	35.560	1.400	-	-	-	-
E	101.600	4.000	-	-	-	-
F	-	-	-	-	-	-
G	-	-	-	-	-	-
H	-	-	-	-	-	-
J	-	-	-	-	-	-
K	-	-	-	-	-	-
L	-	-	13.894	0.547	13.874	0.547
M	-	-	101.600	4.000	115.494	4.547
N	-	-	196.850	7.750	169.060	6.656
O	-	-	57.150	2.250	57.150	2.250
P	7.722	0.304	-	-	-	-
Q	20.625	0.812	-	-	-	-
R	65.075	2.562	-	-	-	-

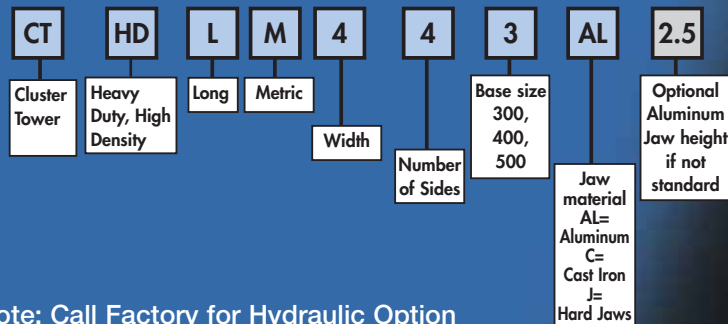
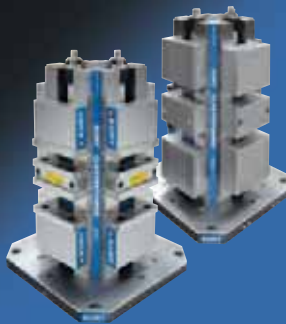


# HDL AngLock Towers and Vises 4 Inch Models

## HDL Double Station Selection Chart



## HDL ClusterTower Selection Chart



Note: Call Factory for Hydraulic Option

### Kurt™ Manufacturing

Industrial Products Division

9445 East River Road NW

Minneapolis, MN 55433

Tel: (763) 574-8309

Fax: (612) 623-3902

Toll Free (US Only): 1 (877) 226-7823

Toll Free Fax (US Only): 1 (877) 226-7828

email address: [workholding@kurt.com](mailto:workholding@kurt.com)

website address: [www.kurtworkholding.com](http://www.kurtworkholding.com)

Kurt, AngLock, ArmLock, CarvLock, ClusterTower, D688, DLU4, DL430, DoubleLock, Groove Lock, InnerLock, Versatile Lock, SeraLock, CT430, CTU4 are registered trademarks of Kurt Manufacturing.

PowerLock and ToolBlox are trademarks of Kurt Manufacturing.

Printed in USA  
BRO.V.0802

© Copyright. All rights reserved

### Distributor



Also Visit: [www.kurthydraulics.com](http://www.kurthydraulics.com)  
[www.kurtchip.com](http://www.kurtchip.com)  
[www.kurteletronics.com](http://www.kurteletronics.com)