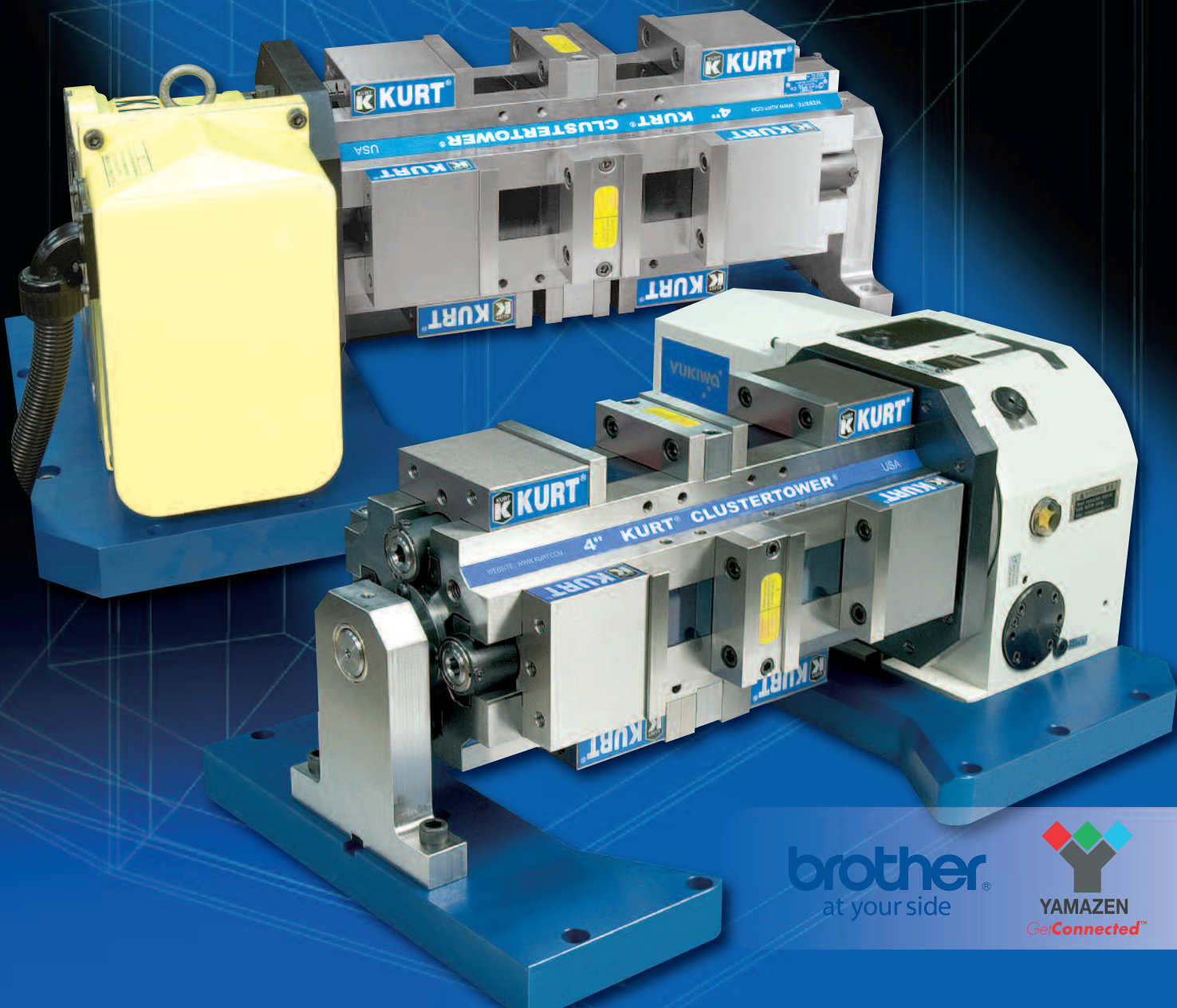




# Kurt Workholding for Brother Machining Centers

- Rotary Table Workholding Systems
- Double and Single Station CNC Workholding



brother  
at your side





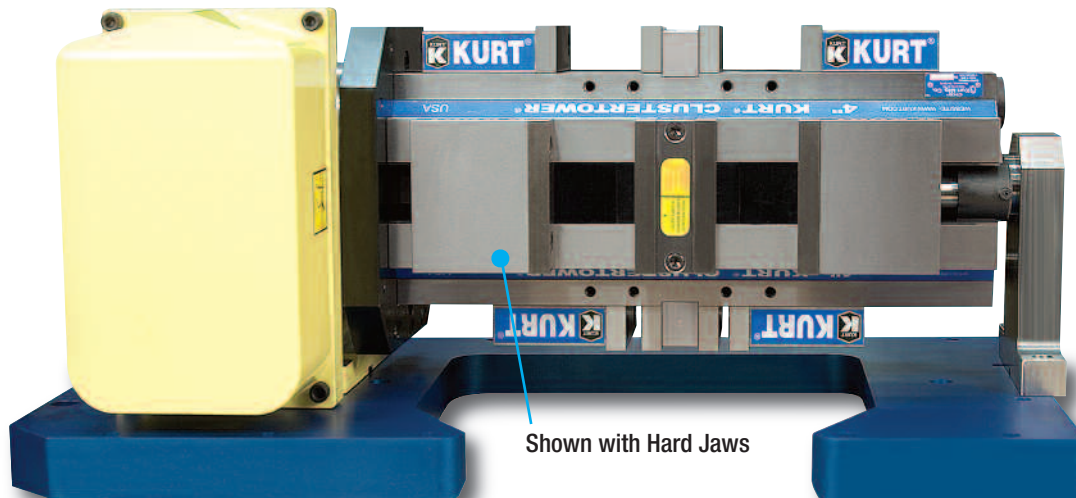
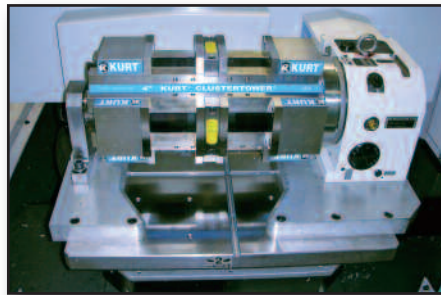
# KURT ROTARY TABLE WORKHOLDING SYSTEMS



GetConnected with Yamazen and Kurt Workholding utilizing the latest rotary workholding solutions to maximize productivity of the Brother 30 Taper Performance Centers.

### Kurt Workholding Features:

- High density vise tower system. Hold multiple parts in eight clamping stations. Increase part volume.
- Repeatable clamping to 0.0002". Each station delivers up to 7,460 lbs. of clamping force at 70 ft lbs of torque.
- Self-adjusting holding block of either front or back jaw for clamping the same or dissimilar sized parts. To further enhance fast operation, an adjustable pre-load feature reduces handle turns for opening and closing clamping stations.
- Ductile iron column insures strength, rigidity and long term accuracy.
- Jaw options available to fit your application. Select from hard jaws, machinable aluminum jaws, machinable ductile iron jaws and aluminum fixture plate.
- Jaws are indexable 180 degrees.
- Lifetime Iron Clad Warranty.

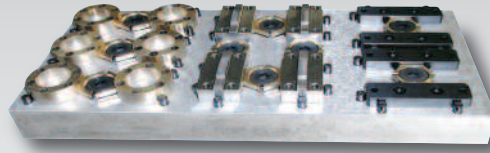
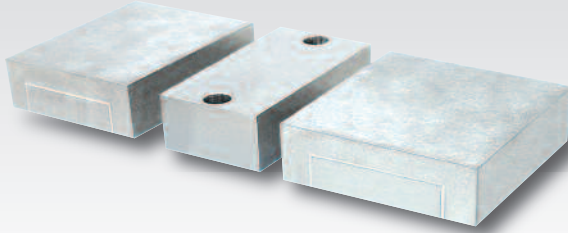


Shown with Hard Jaws

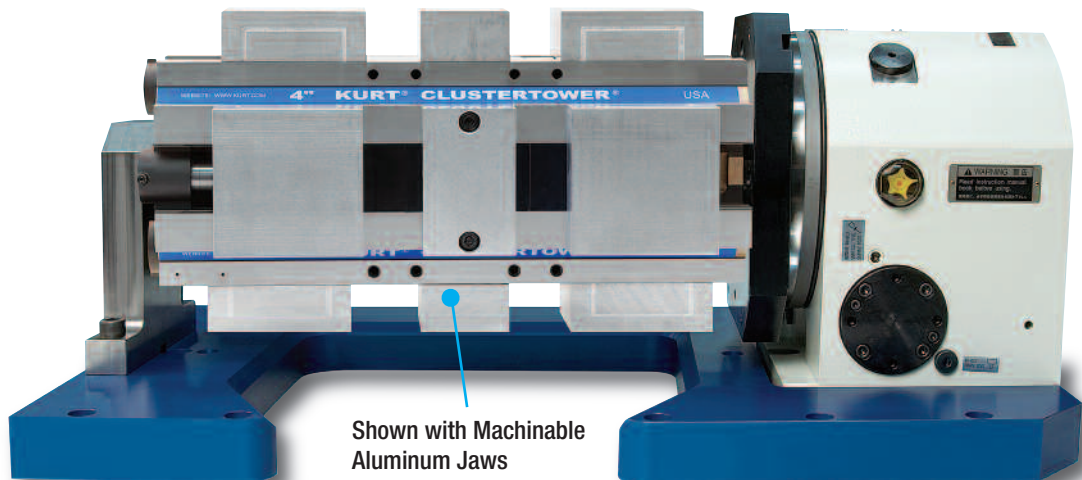
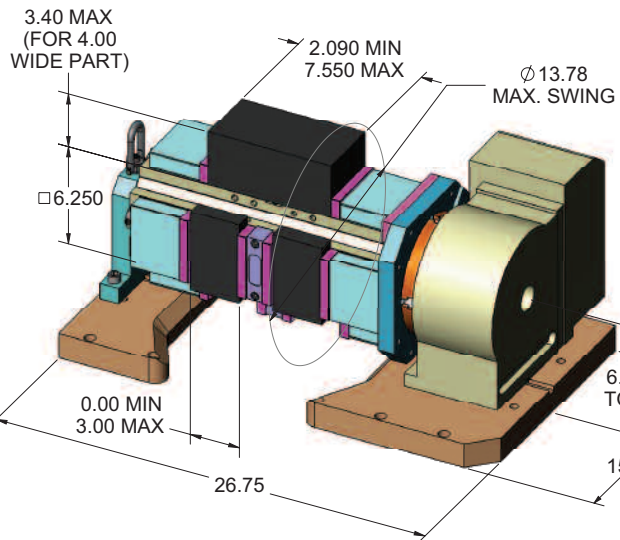
# JAW OPTIONS:

## Available jaw and fixture options:

- Aluminum, cast iron, steel, and fixture plate



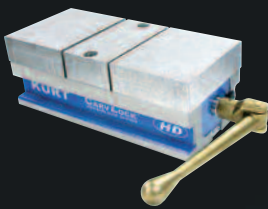
## Dimensions:





# One Stop Workholding Advanced Technology Solutions

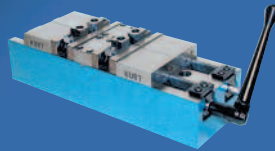
## Kurt Multi-Station Workholding Systems



HD CarvLock® Vise



HDL AngLock® Vise



ClusterLock Vise



DoubleLock® Vise

## Kurt Single Station Workholding Systems



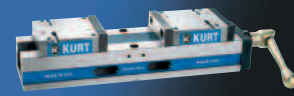
AngLock® D-Series Vise



VersatileLock® Vise



AngLock® PT-Series Vise



Self-Centering Vise

### Kurt™ Manufacturing

Industrial Products Division

9445 E. River Road NW

Minneapolis, MN 55433

Tel: (763) 574-8309

Fax: (612) 623-3902

Toll Free (US Only): 1 (877) 226-7823

Toll Free Fax (US Only): 1 (877) 226-7828

email address: [workholding@kurt.com](mailto:workholding@kurt.com)

website address: [www.kurtworkholding.com](http://www.kurtworkholding.com)

Printed in USA © Copyright. All rights reserved  
LIT.BRO.YB.0805.1

### Distributor



YAMAZEN

**GetConnected™**

USA Regional Headquarters

735 East Remington Road

Schaumburg, IL 60173

Tel: (800) 882-8558

Fax: (847) 882-4270

<http://www.yamazen.com>