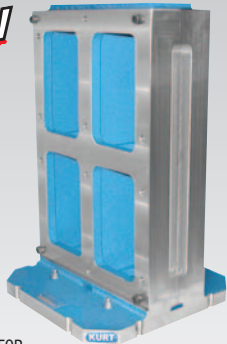




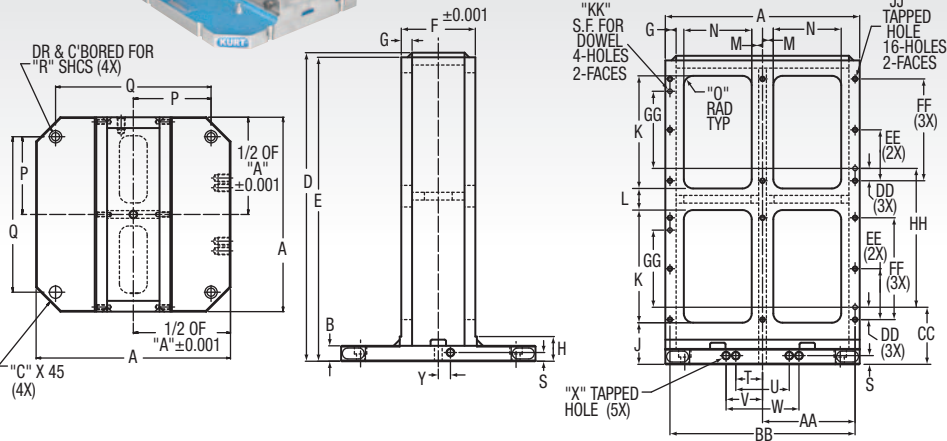
# MODULAR TOOLBLOX™

**NEW**



## 2 Face Modular ToolBlox™

Here's a new lighter weight building block module to add high density and versatility to most model horizontal machining centers. It is over 30% lighter than comparable size tombstones with aluminum sub-plates. Provides a lower cost alternative to dedicated fixtures. Features bolt holes and dowel pattern on each face for fast installation and removal of sub-plates and other workholding components. Built out of Steel.

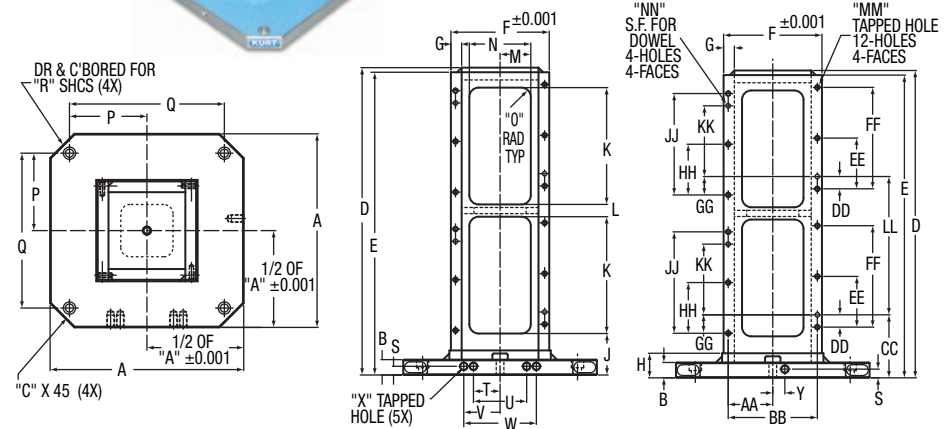


**NEW**



## 4 Face Modular ToolBlox™

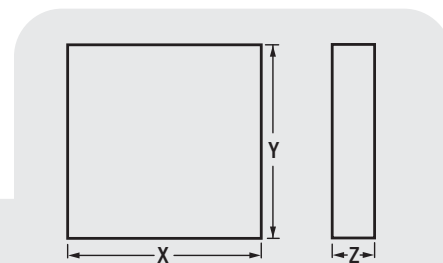
This 4 sided tombstone is another lower cost option over dedicated fixtures. It is over 30% lighter than comparable size tombstones with aluminum sub-plates and is designed to reduce setup time. Provides versatility for mounting manual and hydraulic vises and most clamping devices. Standard and custom sub-plates are also available. Built out of Steel.



	2-SIDED TOMBSTONE CAGE DIMENSIONAL DATA		4-SIDED TOMBSTONE CAGE DIMENSIONAL DATA	
	TC2F40616	TC2F50820	TC4F40808	TC4F51010
A	400mm	500mm	400mm	500mm
B	1.250	1.250	1.250	1.250
C	1.970	2.360	1.970	2.360
D	25.000	28.000	25.000	28.000
E	24.625	27.625	24.625	27.625
F	6.000	8.000	8.000	10.000
G	0.875	0.875	0.875	0.875
H	2.000	2.000	2.000	2.000
J	3.375	3.375	3.375	3.375
K	9.125	10.500	9.500	10.625
L	1.750	2.000	1.000	1.750
M	0.875	1.000	2.500	3.375
N	5.500	7.125	5.000	6.750
O	0.750	0.750	0.750	0.750
P	6.299	7.874	6.299	7.874
Q	12.598	15.748	12.598	15.748
R	5/8	5/8	5/8	5/8
S	0.709	0.709	0.709	0.709
T	2.165	2.165	2.165	2.165
U	4.330	4.330	4.330	4.330
V	2.953	2.953	2.953	2.953
W	5.906	5.906	5.906	5.906
X	5/8-11NC x 1" DP	5/8-11NC x 1" DP	5/8-11NC x 1" DP	5/8-11NC x 1" DP
Y	0.984	0.984	0.984	0.984
AA	7.500	9.4375	3.625	4.625
BB	15.000	18.875	7.250	9.250
CC	4.625	4.625	5.125	5.125
DD	1.000	1.000	1.000	1.000
EE	4.125	4.625	4.125	4.625
FF	8.250	9.250	8.250	9.250
GG	6.250	7.250	1.500	1.500
HH	11.250	12.750	4.125	4.625
JJ	3/8-16NC x 0.88 DP	3/8-16NC x 0.88 DP	8.250	9.250
KK	0.375ø x 0.75 DP	0.375ø x 0.75 DP	5.750	6.750
LL	-	-	11.250	12.750
MM	-	-	3/8-16NC x 0.88 DP	3/8-16NC x 0.88 DP
NN	-	-	0.375ø x 0.75 DP	0.375ø x 0.75 DP
Wt. Lbs.	326	546	245	361
Wt. Kgs.	148	248	112	164

### Sub-Plates

- Kurt offers a variety of standard ToolBlox sub-plates for your application.
- Please specify A36 HRS or 6061 T6 Aluminum.
- You may specify optional hole patterns and/or keyways.
- All Kurt ToolBlox sub-plates are rotary ground to ±0.001" thick.
- All Kurt ToolBlox sub-plates are doweled and bolted to the Kurt Modular ToolBlox allowing the quickest change possible for dedicated fixtures.
- You can permanently mount Kurt vises to the ToolBlox sub-plates for fast, easy set-up changes on milling machines.



MODEL	TC2F40616	TC2F50820	TC4F40808	TC4F51010
X	15.700	19.600	8.000	10.000
Y	23.700	26.700	23.700	26.700
Z	0.940	0.940	0.940	0.094

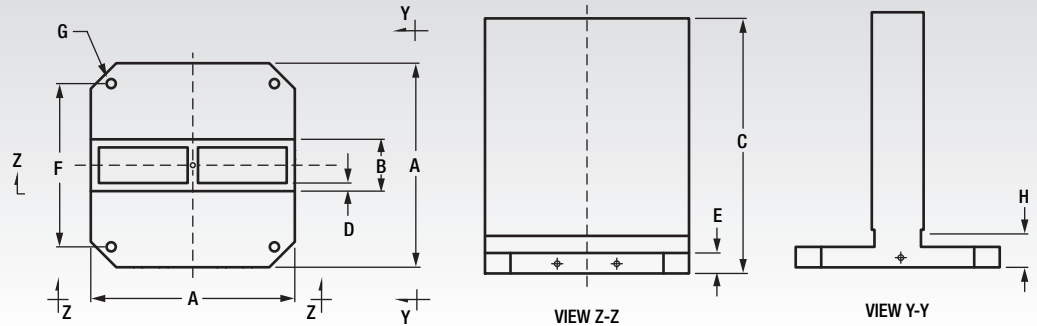
Note: Outside dimensions of A36 steel or 6061 T6 aluminum plates are cut dimensions.

# TOOLBLOX™



## 2 Face ToolBlox™

The Kurt 2 face ToolBlox is ideal for mounting vises. Sub-plates may be bolted and doweled on either side for quick, easy set-up. All vises or collet chucks may be mounted directly on Kurt ToolBlox faces. Made of Class-35 cast iron. Consult our factory for other sizes.

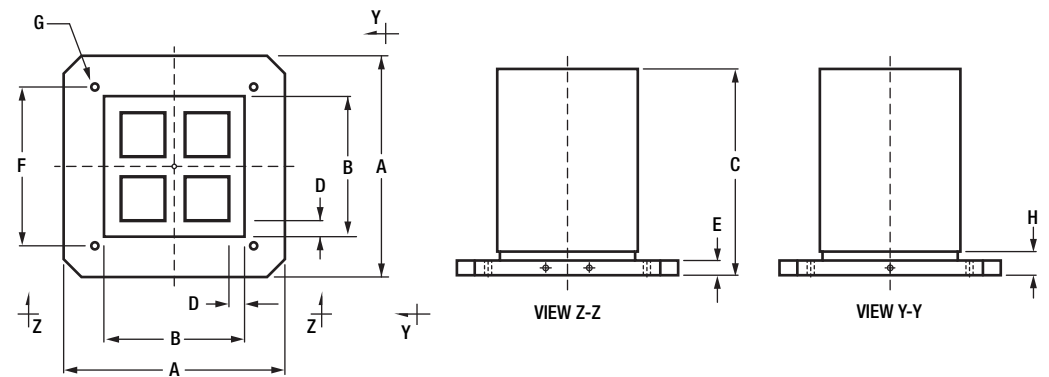


MODEL	A	B	C	D	E	F	G	H	Est. Wt Kgs/Lbs.	Surface Datum A Base Flatness	Face Perp. to Base	Edge Locator Perp	Face Dimension	Face Locator to Edge Parallelism
TB2C40616	400mm X 400mm	6	26	1.500	1.500	320mm	5/8" or M16	2.250	234.1 / 516	0.001	0.003	0.0015	6.000 ±0.002	0.001
TB2C50820	500mm X 500mm	8	34	1.500	1.750	400mm	5/8" or M16	2.500	411.9 / 908	0.001	0.003	0.0015	8.000 ±0.002	0.001
TB2C60825	630mm X 630mm	8	38	2.000	2.000	500mm	5/8" or M16	2.750	662.7 / 1461	0.001	0.003	0.0015	8.000 ±0.002	0.001



## 4 Face ToolBlox™

The Kurt 4 face ToolBlox is ideal for mounting vises of any size. Made of Class-35 cast iron. Consult our factory for other available sizes.



MODEL	A	B	C	D	E	F	G	H	Est. Wt Kgs/Lbs.	Surface Datum A Base Flatness	Face Perp. to Base	Edge Locator Perp	Face Dimension	Face Locator to Edge Parallelism
TB4C40606	400mm X 400mm	6	26	1.500	1.500	320mm	5/8" or M16	2.250	127.9 / 282	0.001	0.003	0.0015	6.000 ±0.002	0.002
TB4C40808	400mm X 400mm	8	26	1.500	1.500	320mm	5/8" or M16	2.250	162.8 / 359	0.001	0.003	0.0015	8.000 ±0.002	0.002
TB4C41010	400mm X 400mm	10	26	1.500	1.500	320mm	5/8" or M16	2.250	197.8 / 436	0.001	0.003	0.0015	10.000 ±0.002	0.002
TB4C50808	500mm X 500mm	8	34	1.500	1.750	400mm	5/8" or M16	2.500	236.8 / 522	0.001	0.003	0.0015	8.000 ±0.002	0.002
TB4C51010	500mm X 500mm	10	34	1.500	1.750	400mm	5/8" or M16	2.500	284.0 / 626	0.001	0.003	0.0015	10.000 ±0.002	0.002
TB4C51212	500mm X 500mm	12	34	1.500	1.750	400mm	5/8" or M16	2.500	333.0 / 734	0.001	0.003	0.0015	12.000 ±0.002	0.002
TB4C51414	500mm X 500mm	14	34	1.500	1.750	400mm	5/8" or M16	2.500	440.0 / 970	0.001	0.003	0.0015	14.000 ±0.002	0.002
TB4C61010	630mm X 630mm	10	38	1.500	2.000	500mm	5/8" or M16	2.750	368.3 / 812	0.001	0.003	0.0015	10.000 ±0.002	0.002
TB4C61818	630mm X 630mm	18	38	2.000	2.000	500mm	5/8" or M16	2.750	778.0 / 1715	0.001	0.003	0.0015	18.000 ±0.002	0.002

Sub-Plates (see page 30)