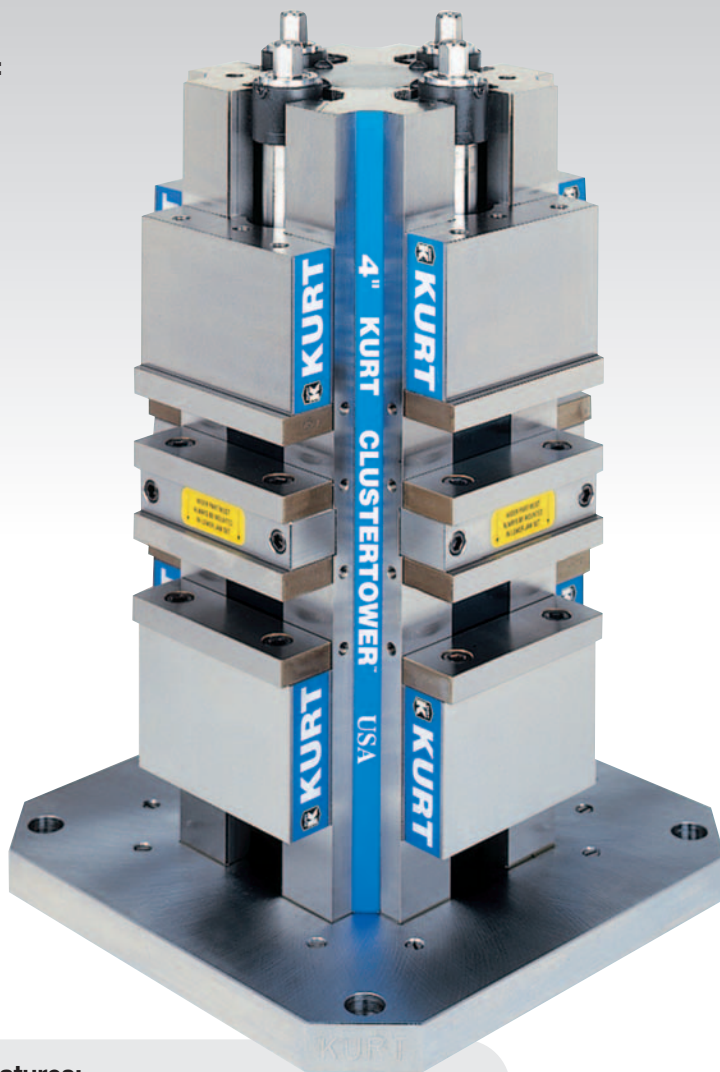




CLUSTERTOWER®

Models:
CT4300
CT4400
CT4500

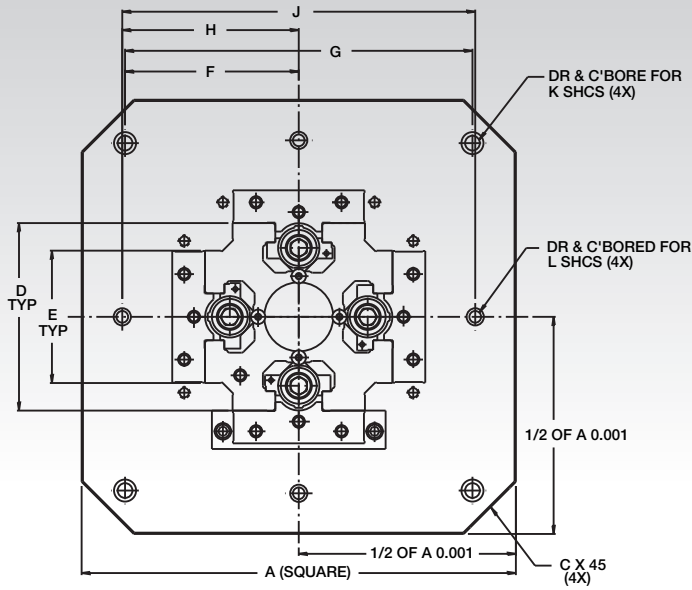


Features:

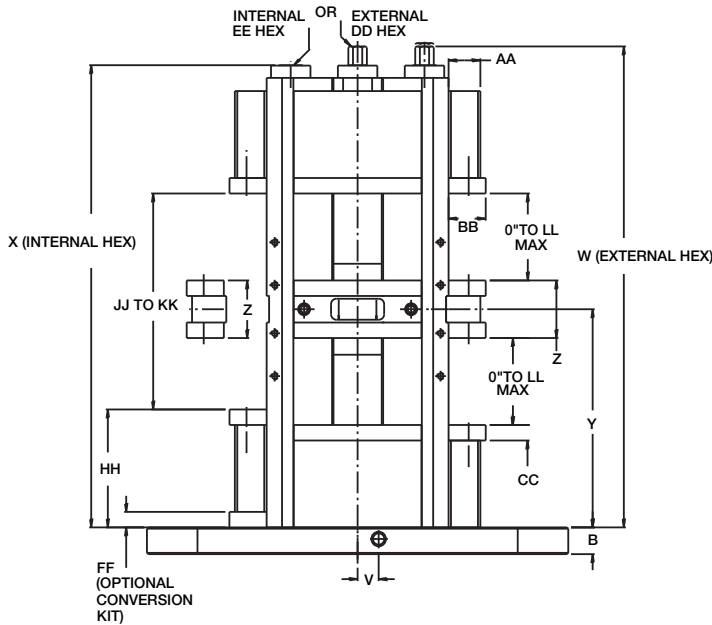
- Cast iron integral vise tower - highly rigid to achieve workpiece immobility and to dampen cutter induced vibration.
- Repeatable clamping to 0.0002".
- Clutch design - automatically returns to correct position - no timing problems EVER!
- Holding block - now "internalized" resulting in 10% overall height reduction. Optional internal hex further shortens overall height.
- Pre-load adjustment is standard.
- Chip guard system - center clamping area is fully covered 100% of the time.
- Famous AngLock® design - minimizes movable jaw lift.
- 3" X 4" maximum part capacity in eight clamping stations (4" Tower).
- Opens to 7.55" in single station 4" conversion model.
(CT430-Kit) - (2 lbs.) 1 Kit/Face Required.
- Three standard base sizes.
Custom bases also available.
- Metric available.
- Optional internal hex available.

CLUSTERTOWER®

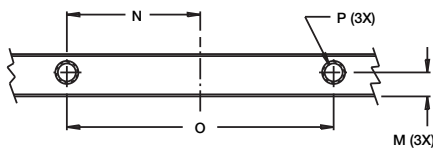
TOP VIEW



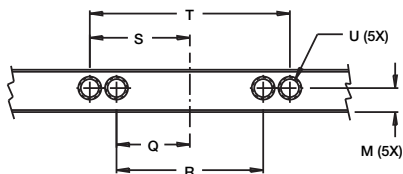
SIDE VIEW



300 BASE PLATE ONLY



400 & 500 BASE PLATE ONLY



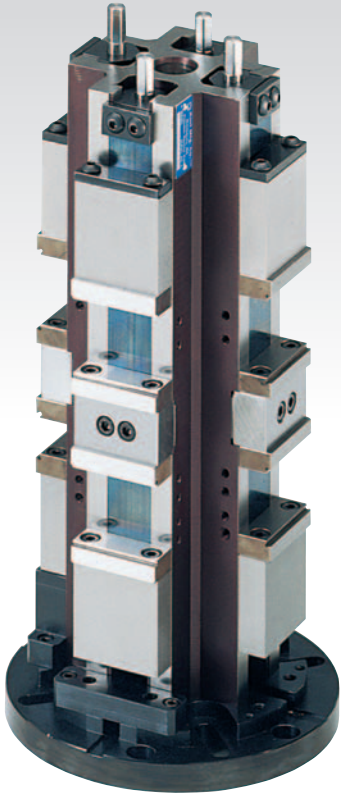
WISE CLAMPING FORCE-LBS.

Torque-Ft. Lbs	CT4300	CT4400	CT4500
10	1046	1046	1046
20	1980	1980	1980
30	2832	2832	2932
40	3740	3740	3740
50	4523	4523	4523

DIMENSIONAL DATA

	CT4300	CT4400	CT4500
A	300MM	400MM	500MM
B	1.000	1.250	1.250
C	0.790	1.970	2.360
D	6.250	6.250	6.250
E	4.000	4.000	4.000
F	5.000	6.299	7.871
G	10.000	12.598	15.748
H	-	6.250	8.000
J	-	12.500	16.000
K	1/2	5/8	5/8
L	-	1/2	1/2
M	0.590	0.708	0.708
N	1.575	-	-
O	3.150	-	-
P	1/2-13	-	-
Q	-	2.165	2.165
R	-	4.330	4.330
S	-	2.953	2.953
T	-	5.906	5.906
U	-	5/8-11	5/8-11
V	-	0.984	0.984
W	17.468 0.120 Movement	17.468 0.120 Movement	17.468 0.120 Movement
X	16.531	16.531	16.531
Y	7.750	7.750	7.750
Z	2.094	2.094	2.094
AA	1.115	1.115	1.115
BB	1.235	1.235	1.235
CC	0.547	0.547	0.547
DD	9/16	9/16	9/16
EE	7/16	7/16	7/16
FF	0.547	0.547	0.547
HH	4.184	4.184	4.184
JJ	2.090	2.090	2.090
KK	7.550	7.550	7.550
LL	3.000	3.000	3.000
Est Ship Wt. Lbs.	350	395	515

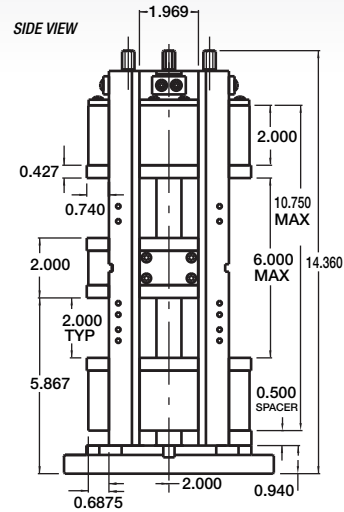
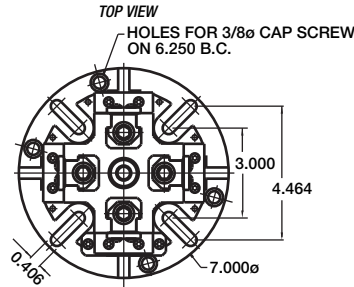
Model:
CT2DC4B



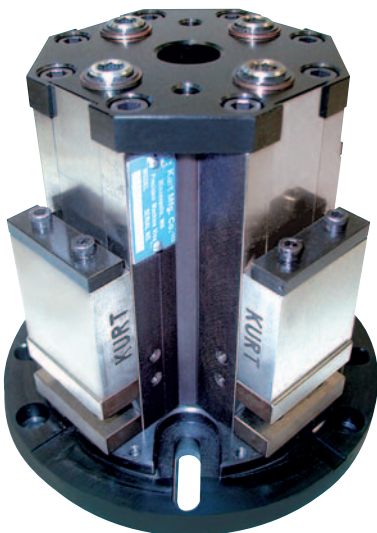
Features:

- Made from ductile iron and steel, a stiffness of 2.5 times aluminum is achieved. Vibration damping of ductile iron is 20 times higher than aluminum. Includes hardened bed and jaws.
- Four double vises with 50mm (1.968") wide jaw and 50mm (2") opening.
- Pilot (0.8768") in both ends. Four and six bolt mounting hole pattern fits all indexers. Has 60° center in outboard end.
- Convertible to single station large opening vise. Conversion kit included.
- Options include machinable jaws, tail support, workstops.
- Chip guards included.
- 45 lbs.

CT2DC4B CLUSTER TOWER DOUBLE MANUAL VISE CLAMPING FORCE	
Torque- Ft. Lbs.	lbs.
9	1000
14	1500
19	2000
25	3000
Maximum Force	3000



Model:
CT2SH4A



Features:

- Made from ductile iron and steel, a stiffness of 2.5 times aluminum is achieved. Vibration damping of ductile iron is 20 times higher than aluminum. Includes hardened bed and jaws.
- Four single vises with 50mm (1.968") jaws and 50mm (2") opening.
- Pilot (0.8768") in both ends. Four and six bolt mounting hole pattern fits all indexers. Has 60° center in outboard end.
- Options include machinable jaws, tail support, workstops.
- Does not require tail support.
- Chip guards included.
- Internal hex screw standard.
- 25 lbs.

CT2SH4A CLUSTER TOWER SINGLE MANUAL VISE CLAMPING FORCE	
Torque- Ft. Lbs.	lbs.
10	1000
15	1500
20	2000
25	3000
Maximum Force	3000

