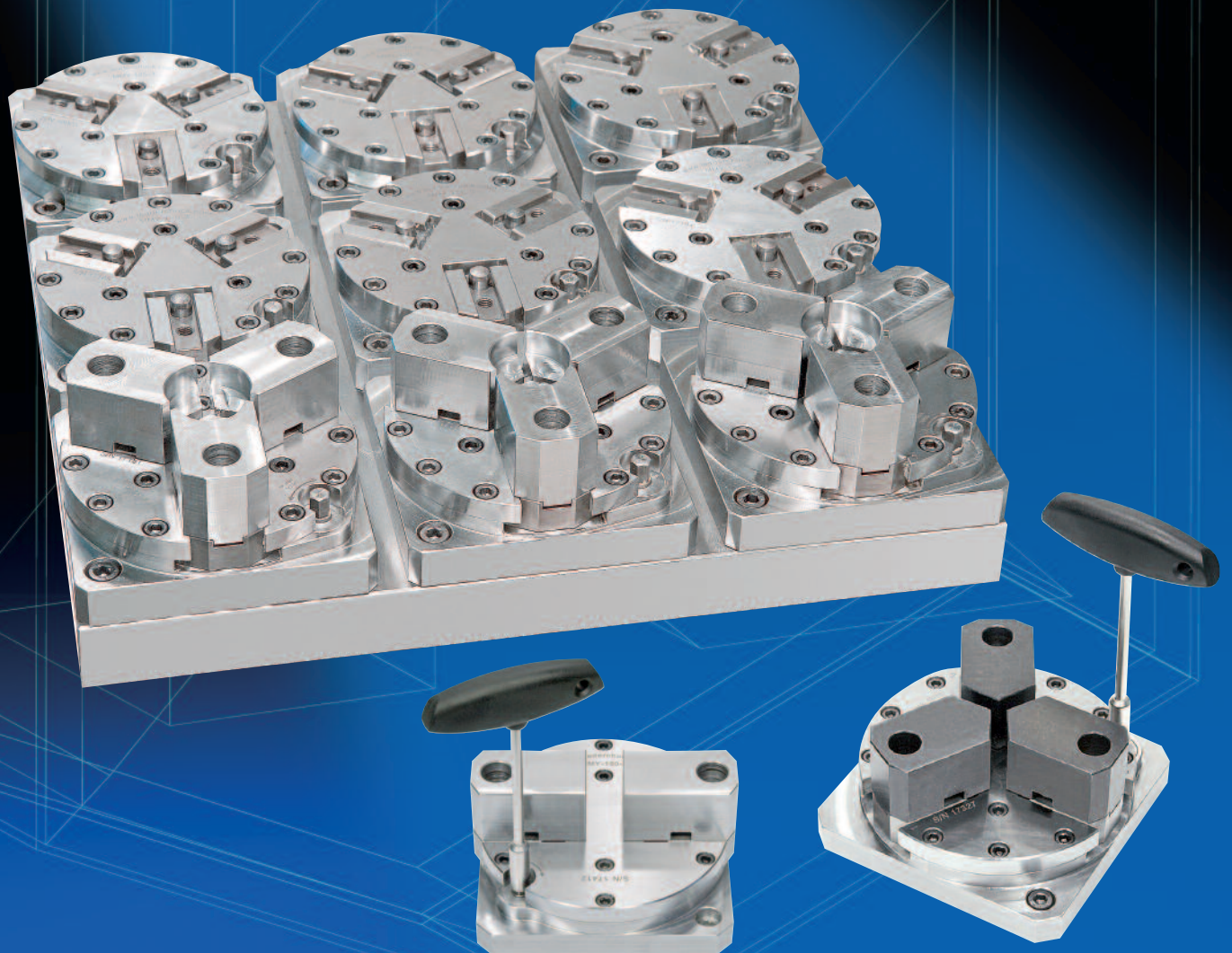




Leader MultiChuck MMY Concentric Clamping Systems Technology

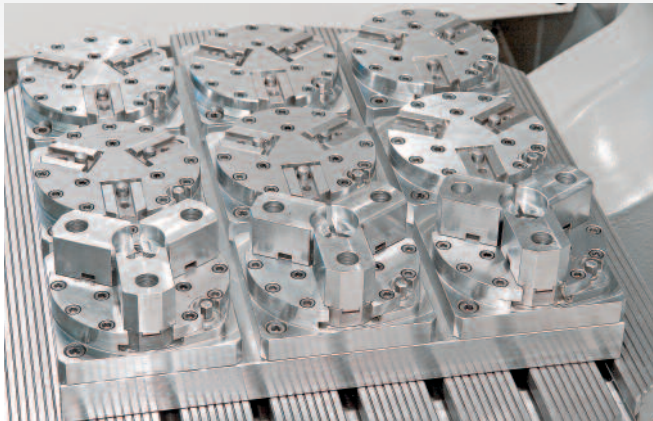
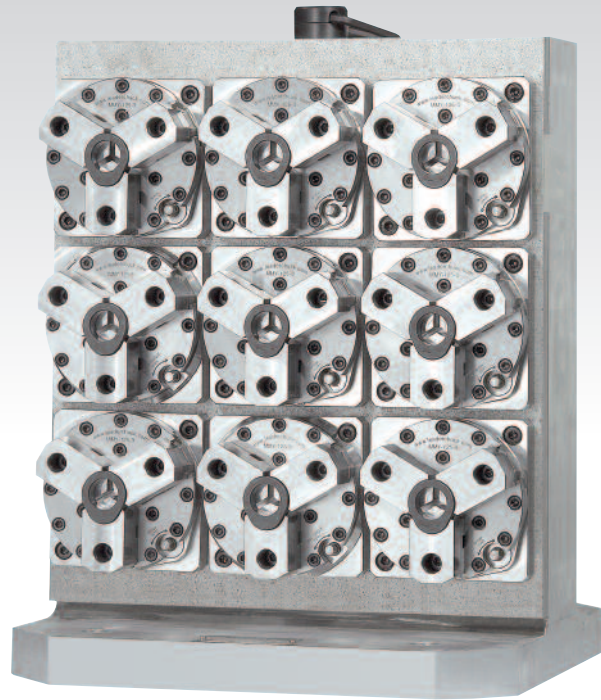




MULTICHUCK MMY CONCENTRIC CLAMPING SYSTEM

The Leader MultiChuck MMY product line consists of manual self-centering static workholding for machining centers, milling machines and grinders. These chucks integrate with Kurt's high density workholding towers and other devices to provide the ultimate in high productivity and high precision workholding.

MultiChuck MMY provides a simple top face operation that enables more chucks, and therefore workpieces, to be 'banked' closely together—which is not the case with the traditional side face lock/unlock systems.



MultiChuck Details

Available with two or three jaws. Standard jaw strokes are 0.157", 0.196", 0.314" and 0.393" across the four variants, and the low height from 0.984" to 1.575" maximizes the machine's Z axis (height can be increased using blocks). Quick change top jaws can be supplied to suit most materials/components. Jaws are sold separately – for more information visit us online at www.kurtworkholding.com

Repeatability for all 2 & 3 Jaw chucks is 0.0002".

MultiChuck MMY can be provided as standard in a range of chuck sizes - 80mm, 100mm, 125mm and 150mm. Base dimensions are: 3.149" x 3.149", 3.937" x 3.937", 4.921" x 4.921" and 5.905" x 5.905". MultiChuck MMY will fit all slotted machine tables.

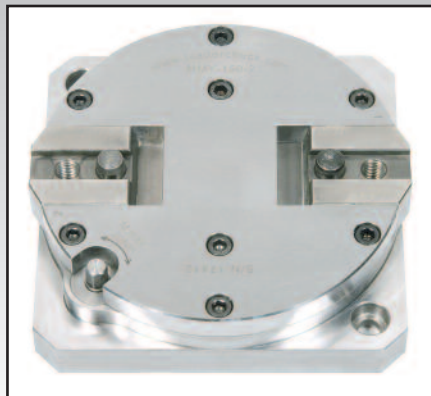
MultiChuck MMY is capable of external and internal clamping and will satisfy both first and second operations in the same machining cycle - thereby providing continuous output of finished components.

Ask us about our custom pallet and tombstone systems.

Three Jaw Style MultiChuck MMY.
Top Jaws are Sold Separately.



Two Jaw Style MultiChuck MMY.
Top Jaws are Sold Separately

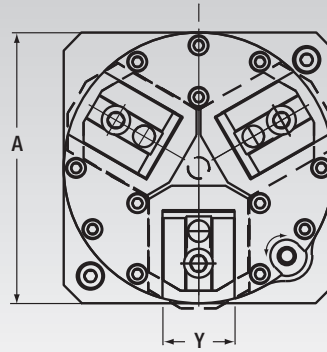


Accessories: Jaws, T-wrenches & Boring Rings.
See back page for available accessories.

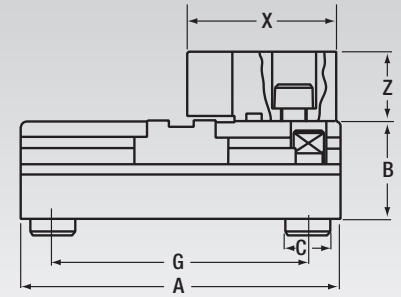


LEADER MULTICHUCK MMY SPECIFICATIONS

MultiChuck MMY Dimensions				
Key	80	100	125	150
A	3.149"	3.937"	4.921"	5.905"
B	0.984"	1.181"	1.378"	1.575"
C	0.551"	0.551"	0.551"	0.551"
G	2.362"	3.149"	3.937"	4.724"
X	1.142"	1.850"	2.323"	2.598"
Y	0.984"	1.181"	1.378"	1.575"
Z	0.709"	1.063"	1.260"	1.457"



Top View



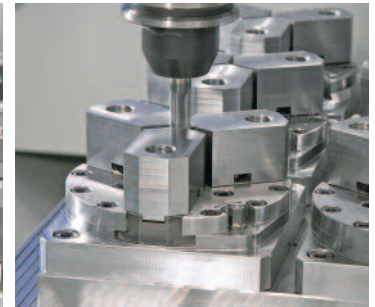
Side View

Jaws are sold separately.

Visit Us Online at www.kurtworkholding.com for more information.

Specifications - MMY Standard Models, External and Internal Clamping											
Chuck Model	Chuck Size		No. of Jaws	Jaw Stroke		Max Input Torque		Max Clamp Force		Chuck Weight	
	inch	mm		inch	mm	inch	mm	ft-lb	N-m	lb	kN
MMY-80-3	3.15	80	3	0.095	2.4	15	20	1,010	4.5	2.4	1.1
MMY-80-2	3.15	80	2	0.095	2.4	10	14	670	3.0	2.4	1.1
MMY-100-3	3.93	100	3	0.106	2.7	18	25	1,460	6.5	4.5	2.0
MMY-100-2	3.93	100	2	0.106	2.7	12	17	960	4.3	4.5	2.0
MMY-125-3	4.92	125	3	0.236	6.0	22	25	2,590	11.5	8.2	3.7
MMY-125-2	4.92	125	2	0.236	6.0	15	17	1,710	7.6	8.2	3.7
MMY-150-3	4.91	150	3	0.325	8.25	22	30	3,260	14.5	12.7	5.8
MMY-150-2	4.91	150	2	0.325	8.25	15	20	2,160	9.6	12.7	5.8

- Chucks are convertible to wide opening model by changing out the cam plate.
- 1-1/2 revolutions for entire stroke.



MMY Wide Opening Models

MultiChuck MMY combines fast initial jaw travel with controlled second-stage clamping to provide a large jaw opening with high gripping force.

Specifications - MMY Wide Opening Models (OD Clamping Only)													
Chuck Model	Chuck Size		No. of Jaws	Clamping Stroke		Opening Stroke		Max Input Torque		Max Clamp Force		Chuck Weight	
	inch	mm		inch	mm	ft-lb	N-m	lb	kN	lb	kg	lb	kg
MMY-80-3/W	3.15	80	3	0.063	1.6	0.252	6.4	15	20	1,010	4.5	2.4	1.1
MMY-80-2/W	3.15	80	2	0.063	1.6	0.252	6.4	10	14	670	3.0	2.4	1.1
MMY-100-3/W	3.93	100	3	0.071	1.8	0.323	8.2	18	25	1,460	6.5	4.5	2.0
MMY-100-2/W	3.93	100	2	0.071	1.8	0.323	8.2	12	17	960	4.3	4.5	2.0
MMY-125-3/W	4.92	125	3	0.158	4.0	0.472	12.0	22	25	2,590	11.5	8.2	3.7
MMY-125-2/W	4.92	125	2	0.158	4.0	0.472	12.0	15	17	1,710	7.6	8.2	3.7
MMY-150-3/W	4.91	150	3	0.217	5.5	0.571	14.5	22	30	3,260	14.5	12.7	5.8
MMY-150-2/W	4.91	150	2	0.217	5.5	0.571	14.5	15	20	2,160	9.6	12.7	5.8



Leader MultiChuck MMY Concentric Clamping Systems Technology

Jaw Boring Ring



T Wrench Handle



Bolt Set and Locating Dowels



3 Jaw Sets



2 Jaw Sets



MMY Jaw Kits and Accessories		
Part#	Description	Qty per Chuck
MMY-080		
LA80-150MMY/P32	"T" Wrench Handle	1
LA80MMY2/P21	Std. Blank 2 Jaw Kit	1
LA80MMY3/P21	Std. Blank 3 Jaw Kit	1
LA80MMY3/P25	3 Jaw Boring Ring	1
LA80MMY2/P20W	2 Jaw Cam Plate-Wide Opening	1
LA80MMY3/P20W	3 Jaw Cam Plate-Wide Opening	1
LA80MMY/P24	Chuck Mounting Kit	1
MMY-100		
LA80-150MMY/P32	"T" Wrench Handle	1
LA100MMY2/P21	Std. Blank 2 Jaw Kit	1
LA100MMY3/P21	Std. Blank 3 Jaw Kit	1
LA100MMY3/P25	3 Jaw Boring Ring	1
LA100MMY2/P20W	2 Jaw Cam Plate-Wide Opening	1
LA100MMY3/P20W	3 Jaw Cam Plate-Wide Opening	1
LA100-150MMY/P24	Chuck Mounting Kit	1
MMY-125		
LA80-150MMY/P32	"T" Wrench Handle	1
LA125MMY2/P21	Std. Blank 2 Jaw Kit	1
LA125MMY3/P21	Std. Blank 3 Jaw Kit	1
LA125MMY3/P25	3 Jaw Boring Ring	1
LA125MMY2/P20W	2 Jaw Cam Plate-Wide Opening	1
LA125MMY3/P20W	3 Jaw Cam Plate-Wide Opening	1
LA100-150MMY/P24	Chuck Mounting Kit	1
MMY-150		
LA80-150MMY/P32	"T" Wrench Handle	1
LA150MMY2/P21	Std. Blank 2 Jaw Kit	1
LA150MMY3/P21	Std. Blank 3 Jaw Kit	1
LA150MMY3/P25	3 Jaw Boring Ring	1
LA150MMY2/P20W	2 Jaw Cam Plate-Wide Opening	1
LA150MMY3/P20W	3 Jaw Cam Plate-Wide Opening	1
LA100-150MMY/P24	Chuck Mounting Kit	1

- Jaws are made from AISI 1018 Steel
 - Chuck Mounting Kits Include:
 - Chuck mounting bolts • Chuck locating bushings • Jaw mounting screws
 - Warranty is 12 months from date of purchase.
 - "T" Handle Wrench sold separately.
- For Jaw Set Options Visit Us Online at www.kurtworkholding.com

Kurt™ Manufacturing

Industrial Products Division

9445 E. River Road NW

Minneapolis, MN 55433

Tel: (763) 574-8309

Fax: (763) 574-8313

Toll Free (US Only): 1 (877) 226-7823

Toll Free Fax (US Only): 1 (877) 226-7828

email address: workholding@kurt.com

website address: www.kurtworkholding.com

Distributor

LIT.MMY.BRO.09.12 Printed in USA © Copyright. All rights reserved

