



# Rotary Table Workholding Solutions





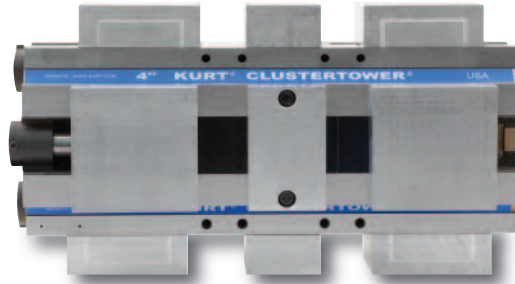
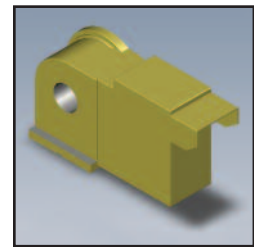
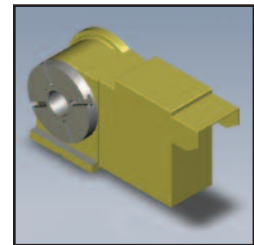
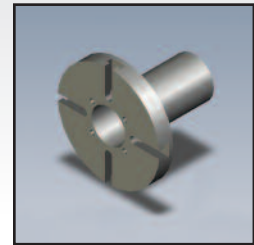
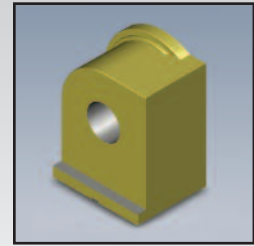
# KURT ROTARY TABLE WORKHOLDING SYSTEMS

## Kurt Workholding Features:

- High density vise tower system. Hold multiple parts in eight clamping stations. Increase part volume.
- Repeatable clamping to 0.0002". Each station delivers up to 7,460 lbs. of clamping force at 70 ft lbs of torque.
- Self-adjusting holding block of either front or back jaw for clamping the same or dissimilar sized parts. To further enhance fast operation, an adjustable pre-load feature reduces handle turns for opening and closing clamping stations.
- Ductile iron column insures strength, rigidity and long term accuracy.
- Jaw options available to fit your application. Select from hard jaws, machinable aluminum jaws, machinable ductile iron jaws and aluminum fixture plate.
- Jaws are indexable 180 degrees.
- Lifetime Iron Clad Warranty.
- Optional single-station convertible kit available for machinable jaws (CTHDLM4-CONVKIT) and hard jaws (CTHDLM4J-CONVKIT).

## What comes with the kit:

- 4" Four-sided column with jaw kits
  - End Support Assembly
  - Indexer Locator
  - T-Nuts
  - Face Plate
  - Locating Pin
  - Screws
- \*Sub-plates not included.  
Can be quoted separately.



Add this tower to your indexer or have Kurt provide a turnkey solution.

## Kits are available for the following models:

CENTROID (GOLDEN SUN)	HAAS	NIKKEN		SMW	TROYKE	TSUDAKOMA		YUASA	YUKIWA
RT-150 (CNC-151R)	HRT210	CNC180	CNC302	RT-225	DL-9	RN-150 (FP)	RNCM-301	DMNC-220	JNC170 (FP)
RT-200 (CNC-201R)	HRT310	CNC180B	CNC302B	RT-275	DL-10	RN-200 (FP)	RNCM-401	DMNC-280	JNC200 (FP)
RT-250 (CNC-251R)		CNC202	CNC320		DL-12	RN-250	RB-250	DMNC-320	JNC250 (FP)
RT-320 (CNC-321R)		CNC202B	CNC321			RN-300	RB-300	DRFT-220	YNC170 (FP)
		CNC200	CNC321B			RNCV-401	RZ-160 (FP)	DRFT-280	YNC200 (FP)
		CNC250	CNC400			RNCM-251	RZ-200 (FP)	DRFT-320	YNC250 (FP)
		CNC260	CNC401						
		CNC260B	CNC401B						

## Available jaw and fixture options:

- Aluminum, cast iron, steel, and fixture plate

